



SharePoint Document Management Powered by ArcGIS Experience Builder

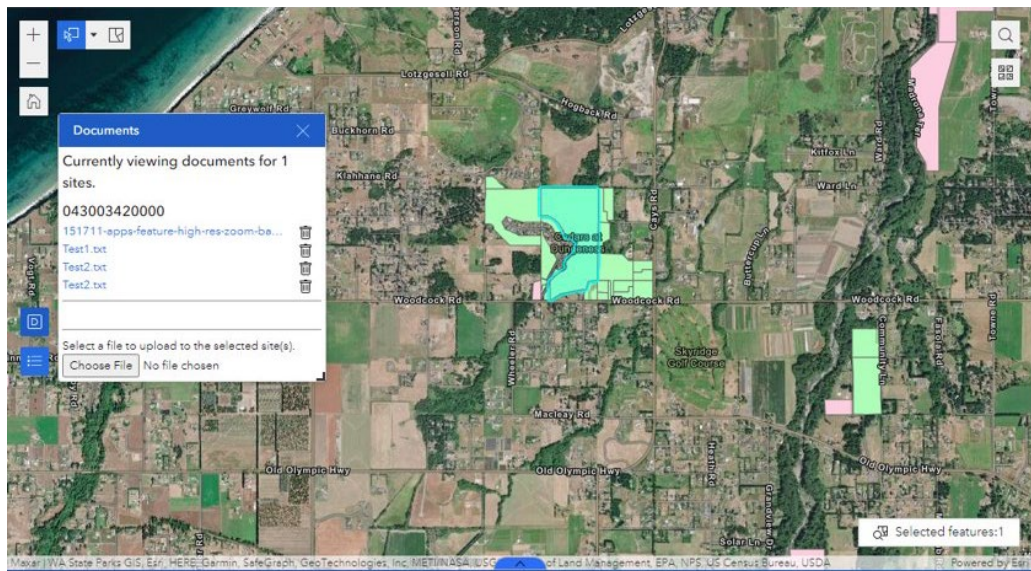
The Challenge

Innovate! Inc. (Innovate) performed a needs assessment for the Jamestown S'klallam Tribe's data management systems for both spatial data and document assets. We installed ArcGIS Enterprise to enable data management, mapping, visualization, and analytics for the spatial data. Innovate recommended using Microsoft SharePoint to store and manage documents.

To maximize the Tribe's return on investment, Innovate built a custom connector for ArcGIS Enterprise and SharePoint. Our **SharePoint Experience Builder Widget** leverages SharePoint's document libraries and lists to create relationships between features (geospatial), table records, and documents (non-geospatial).

The Solution

Within ArcGIS, users can select features within the map and the widget displays linked "Documents" that pulls from the SharePoint repository. The pop-up displays a list of related documents to that specific spatial location (e.g., real estate record, parcel information, etc.). We created a user-friendly design so users can select one or multiple document records to view. Users can manage (add or delete) the related documents within the mapping feature, ensuring a smooth user experience.



In addition, site administrators can set custom permission settings so only authorized users can add/delete related files. The flexible nature of this custom widget allows new functionality to be added to any Experience Builder project.

ESRI AWARDS AND SPECIALTY DESIGNATIONS



Innovate! is a woman- and minority-owned consulting firm focused on driving measurable business value, making a difference in the world, empowering our employees, and exploring the boundaries of what is possible with our clients.

For more information about Innovate, contact IT@innovateteam.com 703.922.9090

Benefits of this Solution

Our SharePoint Experience Builder Widget enables users to relate geographic locations to non-spatial data (e.g., documents, forms, etc.), helping visualize the relationship between different forms of information. Users can seamlessly transition between SharePoint and ArcGIS, simplifying the search process for resources. This solution allows its user to realize their investment in SharePoint and ArcGIS to maximize the functionality of both of these powerful platforms.

ArcGIS Experience Builder

Innovate's development team regularly augments ArcGIS Experience Builder's out of the box widgets with custom created functionality to fulfill specific organizational needs. Features include:

- Custom app templates
- Fixed or scrolling screen
- 2D and 3D content visualization
- Brand apps with themes
- Add interconnected tools with drag-and-drop widgets
- Create, deploy, and manage apps in a single place

SharePoint

Innovate provides SharePoint system design, customization, implementation, and support services for clients such as the US Environmental Protection Agency (EPA) and Human Resources and Services Administration (HRSA).

About Innovate

As an Esri Gold Partner, Innovate has used the Esri's product suite for decades to deliver the full spectrum of geospatial services to public and private sector organizations, such as the US EPA, US Geological Survey (USGS), Arbor Day Foundation, and the Yurok Tribe. Our team is frequently requested by Esri to participate and present at user and technical conferences, such as Esri's annual Federal User Conference and regional events (e.g., Esri NW Conference, Washington URISA, and the North Carolina GIS Conference). Innovate has earned numerous specialties from Esri and our award-winning Esri products are recognized for providing enhanced professional services and industry expertise.

- **Esri 2022 High Potential Award** for our innovation and excellence in helping customers succeed with ArcGIS technology such as the *Impact Dashboard* application and geospatial enterprise platform developed for the Arbor Day Foundation.
- **Featured in the 2020 NITAAC Solutions Showcase** for usage of geospatial technology to design and develop a Sanitary Beach Survey Application.
- **Esri 2020 Federal Small Business Specialty Collaboration Partner Award** in recognition of our ability to successfully partner with multiple stakeholders on the support and modernization of the DOI Integrated Reporting of Wildland Fire Information (IRWIN) application, an inter-agency tool.
- **Esri 2018 Award for Innovation** for usage of Esri emerging technologies to design, develop, and support applications for the EPA.